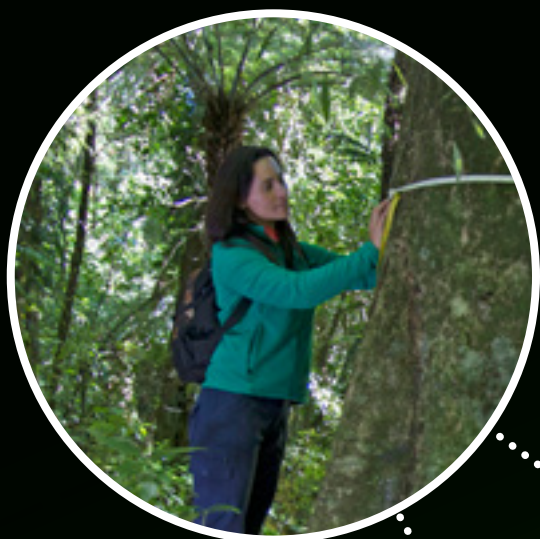


## Te Pakirehua:

# INQUIRY

FEBRUARY 2018



## WELCOME

*Nau mai. Ngā mihi nui ki a koutou katoa!*

*Welcome to the first research newsletter for 2018. This will be a very busy year for research at Toi Ohomai with several big projects underway, some exciting events being planned, and our inaugural participation in the Performance-Based Research Fund in the middle of the year.*

# THE RESEARCH OFFICE TEAM

It is my pleasure to introduce the new Research Office team, who work across all the campuses to support research:



**Tepora Emery:** Kaupapa Māori Research Advisor (half-time) and Leader of the National Science Challenge project: Toitū te kainga, toitū te ora, toitū te tangata (half-time). Please consult Tepora for advice when planning your research projects.



**Kate Shanaghan:** Performance-Based Research Fund (PBRF) and Special Projects Leader. Kate is available to answer PBRF inquiries and help staff with research outputs reporting using the Research Outputs Management System (ROMS).



**Rebecca Lausberg:** Research Office administrator - the person to talk to about research applications, travel awards and much more.



**David Bishop:** Research Coordinator - Faculty of Engineering, Creative, Technology and Infrastructure (0.5 position).



**Cath Fraser:** Research Coordinator - Faculty of Business, Management and Legal Studies (0.5 position).



**Judith Honeyfield:** Research Coordinator - Faculty of Education, Health, Nursing and Social Services (0.5 position, commencing March).



**Philippa Crombie (Pip):** Research Coordinator - Faculty of Community, Wellbeing and Development (0.3 position); and Faculty of Tourism, Hospitality and Service Industries (0.2 position).

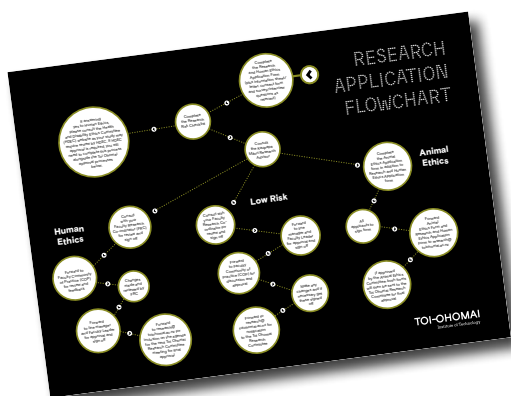


**Keith Gregor:** Research Coordinator - Faculty of Primary Industries (0.2 position).

## RESEARCH PROCEDURES

We are pleased to finally announce a new Toi Ohomai research procedures booklet, as well as new forms and templates which are designed to assist people through every stage of research approval, funding and reporting. The new e-booklet is available on the intranet or from the Research Office. You will find a summary of the new research approval processes at the end of this newsletter.

All research applications will need to be quality assured before coming to the Research Committee; quality assurance will be provided by Research Communities of Practice (COP) in the faculties. Researchers are advised to familiarise themselves with the new procedures and ensure they use the new forms. For faculties, your Faculty Research Coordinator will be your first point of contact and will be able to advise and support you on your research journey.



## PERFORMANCE-BASED RESEARCH FUND (PBRF)

Staff Evidence Portfolios (EP) need to be uploaded to the TEC website by 6 July 2018. Approximately 25 staff are currently preparing their Evidence Portfolios and will need support from their teams and managers. The Research Office is also providing advice and quality assurance for these portfolios. The due date for researchers to complete the first draft of their EP is April 2018.

## RESEARCH OUTPUTS MANAGEMENT SYSTEM (ROMS)

By now, research outputs and contributions for 2017 should have been entered into the ROMS database. However, it is never too late, so any outstanding outputs can still be entered. This is important for everyone, not just those submitting an EP for the PBRF. Please contact Kate Shanaghan ([kate.shanaghan@toiohomai.ac.nz](mailto:kate.shanaghan@toiohomai.ac.nz)) if you need any help with ROMS.

# INDIVIDUAL COVERAGE OF COMPLETED RESEARCH

## Parrots with Backpacks?

During her PhD field work, Erin Kennedy spent time in Arthur's Pass National Park in an attempt to confirm if specialised data logging backpacks could be safely attached to one of New Zealand's largest, most intelligent, mountain-dwelling parrots, perhaps best known for their fearless interactions with tourists and their cars. Many painful Kea pecks later, it was found that the parrot-proof GPS devices worked and the data helped to identify essential habitats, migratory pathways and potential hotspots for human-wildlife conflict, which are all critical for developing effective management strategies. (<http://www.aoucospubs.org/doi/full/10.1642/AUK-14-196.1>)

## A comparison of methods

Determination of tree abundance is one of the main parameters used to characterise forest structure. Three common ways of estimating forest basal area density are quadrat plots, the point centred quarter method, and angle gauge sampling. Debashis Dutta and Keith Gregor, with statistician Derek Christie, present explicit formulas which are designed to assist with decisions around forest management, which can be used to find the number of trees needed to be sampled to obtain any given degree of survey precision, and from these, the number of survey points that must be used.

## Manaakitanga in leadership and Organisational Culture

In October of last year, Bart Vosse (Faculty Leader of Tourism, Hospitality and Service Industries) presented at the Awakening(s) Through Connection: Integrating Indigenous Culture into Educational Practice Conference at Windward Community College, Hawaii. Of all the principles of Māoritanga, Manaakitanga is the one Bart feels most connected to – the idea of caring for others, inspiring and empowering them, walking alongside them and making them feel at home. During the conference, he shared the connections he has made through the bi-cultural culture we experience as educators.

## ePosts

December saw the completion and publication of a new resource for tertiary teachers, joining the existing *Signposts* and *Goalposts* booklets, also published by Ako Aotearoa. The project was completed through the co-funding model, under the Northern Regional Hub, and piloted and reviewed by 15 colleagues from institutions across New Zealand. Following the same format as the previous resources, *ePosts* is a booklet style of 10 one-page "primers", written in simple, accessible language, demystifying concepts, terminology and principles. It is accompanied by a glossary, bibliography and, in the online version, interactive links to case studies and practice examples. This is an entry-level handbook for new tertiary teachers and teachers new to eLearning so they can introduce effective, proven strategies into their own classroom practice.

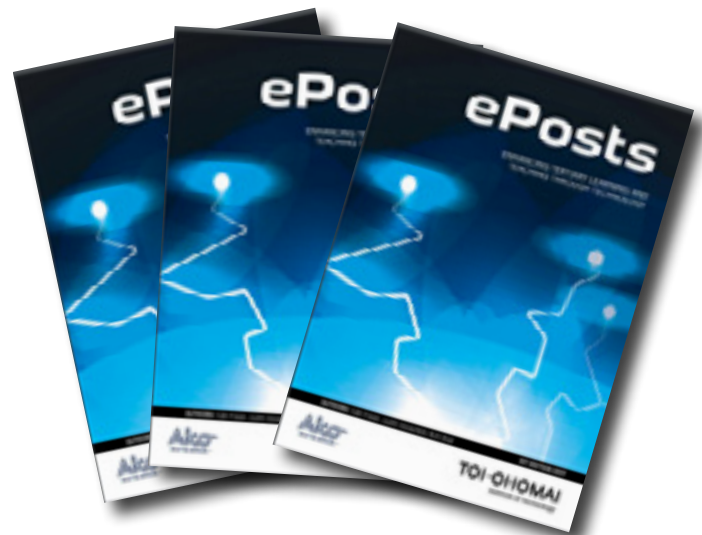
Fraser, C., Honeyfield, J., & Boal, R. (2017). *ePosts: Enhancing tertiary learning and teaching through technology*. Wellington, New Zealand: Ako Aotearoa. Available at <https://ako.aotearoa.ac.nz/e-posts-intro-to-effective-online-teaching>



A Kea wearing a GPS logger on a backpack harness.  
Photo credit: B. McKelvey



Student, Diane Rutten, determining the basal density of forest trees.



## INDIVIDUAL COVERAGE OF COMPLETED RESEARCH

continued

**Summer Scholarship Snapshot** – 21 March 2018, 2.30pm – 4pm, DT 106 at Bongard

The summer of 2017/2018 saw 10 Summer Scholarships being awarded across various faculties. Successful students were tasked with carrying out supervised research for a wide variety of projects. Part of the scholarship requires the student to present an overview of the research they were involved with. Come along to see these presentations in action and learn more about how you or someone in your faculty might benefit from this incentive next summer.

### Curiosity

Mark Friday 8 June in your diary for the Toi Ohomai research symposium, Curiosity, which will be held on the Mokoia Campus. A full programme of presenters will be available and you are welcome to join some or all of the presentations. There are still some slots available – let us know if you would like to present your research.

### Early notice: Writers' Retreat 2018

We'll be returning to Ōhope Beach this year for our week-long residential writers' retreat during the 1-5 October teaching break. This is a professional development opportunity open to all Toi Ohomai staff who have a writing project they want to progress. This might include, but is not limited to, writing for publication (journal articles, books and chapters, articles in industry publications); dissertations and theses for high-level qualifications; or creative writing. Please contact Cath Fraser for further information.

### Kaupapa Maori Research Services

These are available for all staff considering research with hapori Māori who may want some 'how to' advice or support. Contact Dr Tepora Emery, Kaupapa Māori Research Advisor [tepora.emery@toiohoma.ac.nz](mailto:tepora.emery@toiohoma.ac.nz)



**TOI-OHOMAI**  
Institute of Technology

### CONTACT US

#### Rotorua Campus

T 07 346 8811

E [research@toiohoma.ac.nz](mailto:research@toiohoma.ac.nz)

#### Tauranga Campus

T 07 557 8679

E [heather.hamerton@toiohoma.ac.nz](mailto:heather.hamerton@toiohoma.ac.nz)

# RESEARCH APPLICATION FLOWCHART

